

# COSMOS Meeting Hamburg 2006

## Minutes

**Date:**

January 10 2006

**Time:**

10:00 a.m. - 16:00 p.m.

**Venue:**

MPI for Meteorology, Room Z002, Bundesstr. 53, D-20146 Hamburg, Germany

**Chair:**

Prof. Dr. G. Brasseur; MPI-M

**Organizers:**

Dr. D. Jacob, Dr. M. Giorgetta, R. Budich; all @MPI-M

**Minutes:**

R. Budich, budich@dkrz.de

**Agenda**

To be found under URL: <http://cosmos.enes.org>

## Short Description

The meeting started at 10:00, with 15 participants. After a welcome Guy Brasseur gave an introduction to the meeting: Major purpose was to review and discuss recent development w.r.t. COSMOS; furthermore the preparation of the General Assembly 2006 of the COSMOS community in Lüneburg had to be started. A lively discussion about purpose, goals and strategies for COSMOS was carried out, which took almost the complete time until 16:00 hours. Propositions and Decisions are presented on the next paragraphs.

## COSMOS: The vision

### COSMOS

- Is a Scientific Network for Earth System Modelling
- Intends to develop virtual copies of the complex Earth System as unprecedented Open Source tool, which can be submitted to all kinds of forcing, including human activities; this will result in scientific breakthroughs
- Intends to enable the Earth System Modelling Community to answer questions they could not have answered before; this will support decision makers
- Is an interest group and an international network of excellent expertise; this will help to integrate the community
- Is agreeing on a Memorandum of Understanding; this will have an aligning function for the members of the COSMOS network

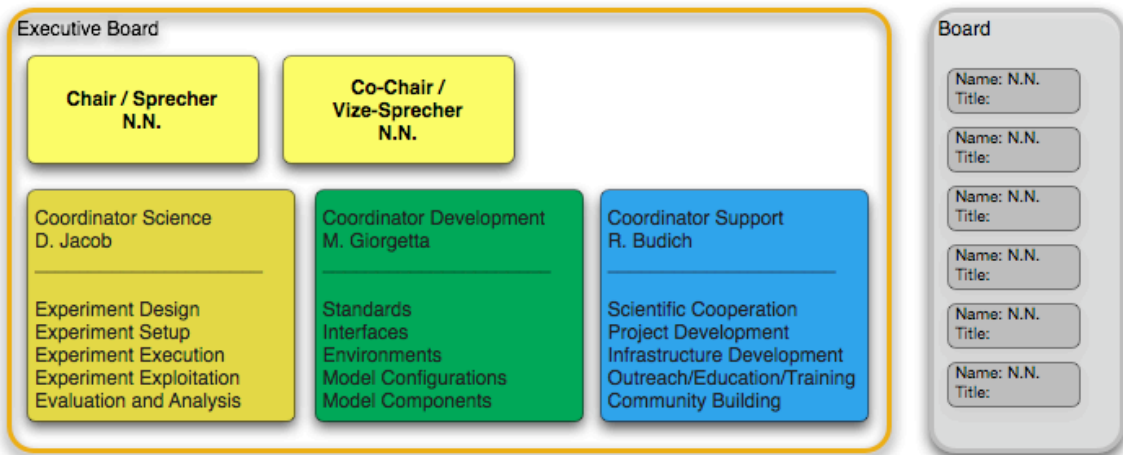
## COSMOS is not

- A Model
  - But a collection of (coupled) component models developed by the COSMOS community for scientific purposes
- A Modelling Framework
  - But supports the standards proposed by PRISM and supported by PSI
- An Infrastructure
  - But enables access to and usage of infrastructures like DKRZ or M&D and others

## COSMOS: Proposition for a Future Structure

The group decided to propose the following organisational structure to the PRISM General Assembly 2006:

### COSMOS Proposed Organisational Structure



Status Feb 20 2006, Author R. Budich, budich@dkrz.de, File: structure.graffle, <http://cosmos.enes.org>

- The group asked Martin Claussen if he would accept to be the chair, and the 3 people indicated on the right (to continue) to be coordinators
- The formerly existing 2 boards are proposed to be unified to one; members have to be sought for and should play an active role within COSMOS
- It was proposed to have a Co-Chair, who should preferably come from a European University; candidates to be sought for
- Once funding has been found, a review panel has to be set up

## COSMOS: Coordination

The group decided to suggest to coordinate COSMOS activities in the way shown above.

## COSMOS: Funding

The COSMOS community will need money for its networking activities

- The COSMOS coordinators are asked to explore and propose concrete possibilities within 2006; completion before the General Assembly 2006 preferred
- Scientific or other project funding should be applied for on a case by case basis
- Multi-source funding or funding in national programs in different areas of interest is supported
- The group of COSMOS coordinators will support any action in this direction by providing appropriate forums for these activities

## COSMOS: To Dos

- The Community will be informed about the results of the HH meeting after iteration of these minutes amongst participants
- The Project Description has to be circulated before the annual meeting 2006 to be aligned with opinions in the community, fine-tuned and finished
- It needs to be completed by suggestions for concrete, realistic projects, like the millennium run at MPI-M
- A Memorandum of Understanding should accompany the Project Description
- The relation to infrastructure centres like CSC, DKRZ, M&D and others has to be negotiated, formalized and optimized
- Interaction with infrastructure initiatives like ENES, PSI or DEISA has to be ensured
- A Chair and Co-Chair have to be elected in Lüneburg; Martin Claussen is a candidate for the chair
- The new structure has to be agreed upon by the participants of the General Assembly.

## Participants

Guy Brasseur, MPI-M  
Erich Roeckner, MPI-M  
Marco Giorgetta , MPI-M  
Christian Reick, MPI-M  
Hendrik Elbern, RIU  
Martin Claussen , MPI-M  
Stefan Hagemann, MPI-M  
Johann Jungclaus, MPI-M  
Daniela Jacob, MPI-M

Ernst Maier-Reimer, MPI-M  
Uwe Mikolajewicz, MPI-M  
Pauline Midgley, Uni Stuttgart (for BMBF)  
Uwe Ulbrich, FUB  
Reinhard Budich , MPI-M  
Jochem Marotzke , MPI-M  
Robert Sausen, DLR